

# COCCA DEVELOPMENT

## RETAIL SPACE FOR LEASE

**810 HENDERSON STREET**

PALACIOS, TX 77465



- Formerly Alco Department Store
- Large ample parking lot with nearly 100 spaces
- Approximately 5,000 cars pass by daily
- Less than 3 miles from Palacios Municipal Airport
- Halfway between Corpus Christi and Houston

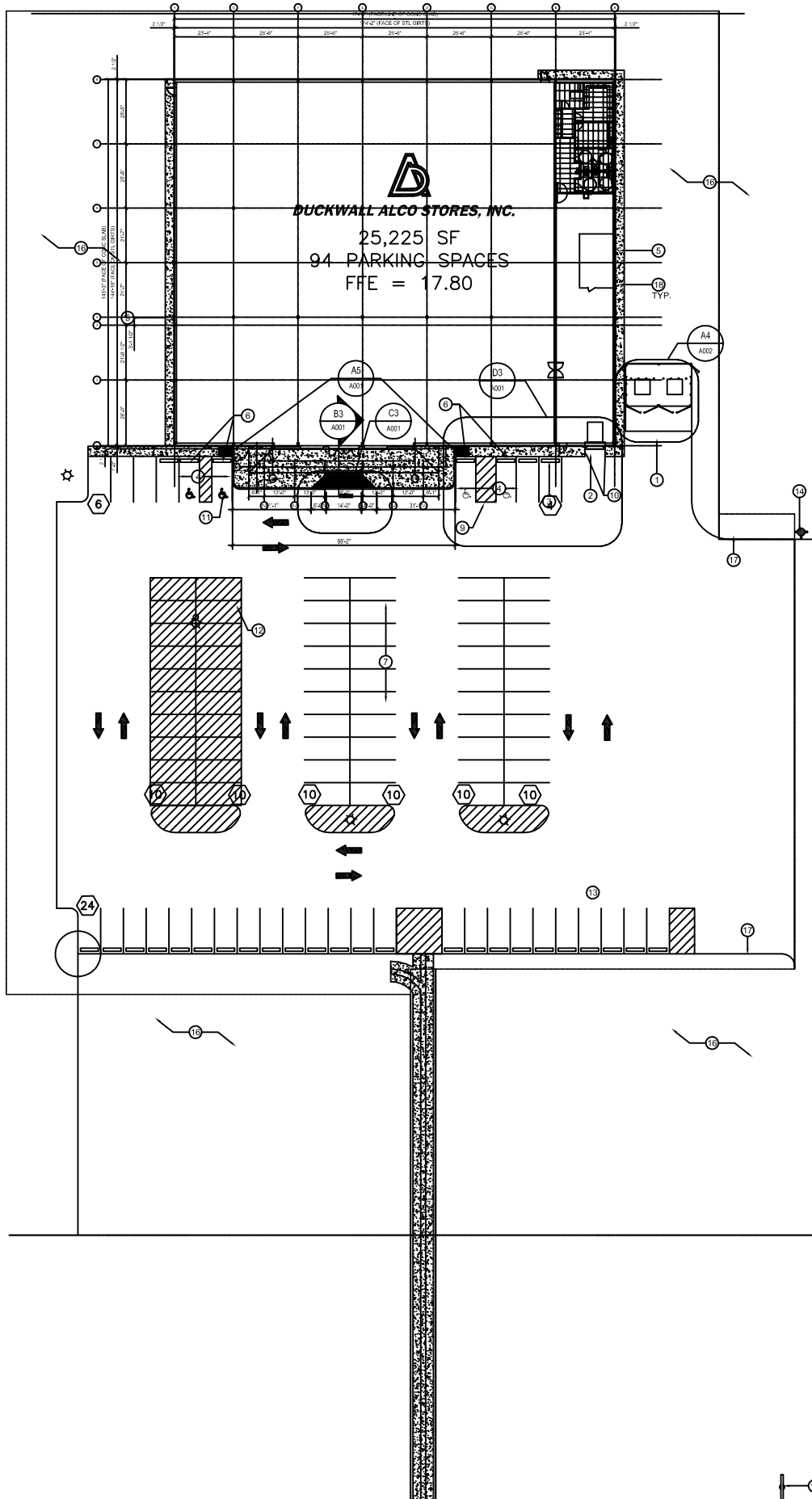
AVAILABLE SUITE AREA—\$8.50/square foot NN (Self CAM):

Approximately 25,250 square feet

NN: Base rent plus Real Estate Taxes and Insurance; tenant responsible for all common area maintenance

**CALL 330-729-1010 FOR MORE INFORMATION**

[www.coccadevelopment.com](http://www.coccadevelopment.com)



A1

SITE PLAN

SCALE: 1" = 30'-0"



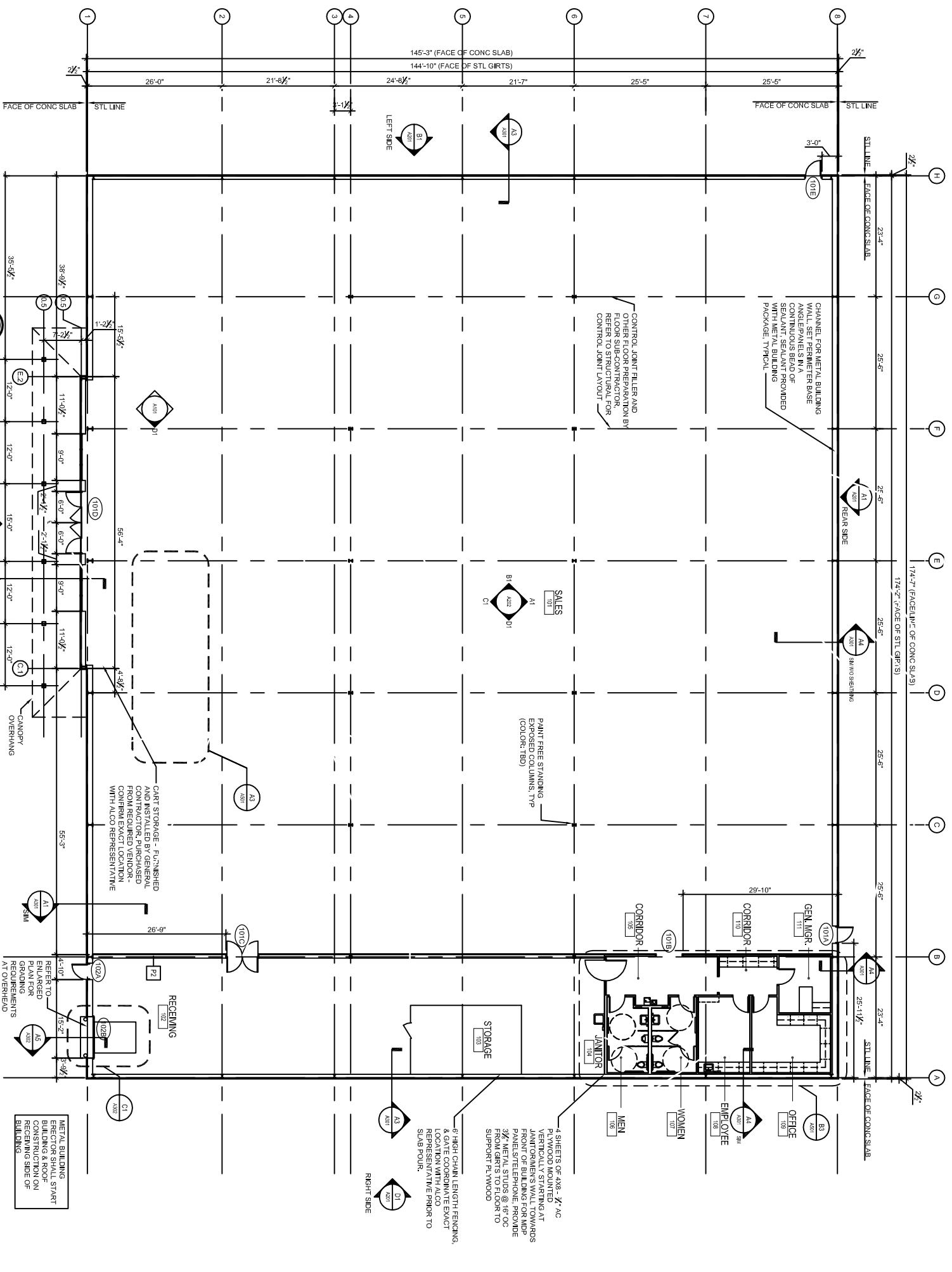
NORTH

STATE HIGHWAY 35  
(HENDERSON AVE.)

**FLOOR PLAN**  
SCALE: 3/32"=1'-0"



5'-4"  
0  
54  
108"  
214"



METAL BUILDING  
ERECTOR SHALL START  
BUILDING & ROOF  
CONSTRUCTION ON  
RECEIVING SIDE OF  
BUILDING

CART STORAGE - FURNISHED  
AND INSTALLED BY GENERAL  
CONTRACTOR, PURCHASED  
FROM REQUIRED VENDOR -  
WITH ALSO REPRESENTATIVE

RECEIVING

4 SHEETS OF AN8-3/4" AC  
PLYWOOD MOUNTED  
VERTICALLY STARTING AT  
JANITOR'S WALL TOWARDS  
FRONT OF BUILDING FOR MDP  
PANELS/TELEPHONE. PROVIDE  
3/8" METAL STUDS @ 16" OC  
FROM PARTS TO CORNER TO  
SUPPORT PLYWOOD

STAIRS GUMM LENGTH FENCING,  
& CHAIR ELEVATOR ELEMENT  
LOCATION WITH ALSO  
REPRESENTATIVE PRIOR TO  
SLAB POUR.

CONTROL JOINT FILLER AND  
OTHER FLOOR PREPARATION BY  
FLOOR SUBCONTRACTOR OR  
GENERAL CONTRACTOR TO  
CONTROL JOINT LAYOUT

CHANNEL FOR METAL BUILDING  
WALL SET PERMETER BASE  
WITH FLOOR FINISH. PROVIDE  
CONTINUOUS BEAD OF  
SEALANT SEALANT PROVIDED  
WITH METAL BUILDING  
PACKAGE, TYPICAL

PAINT FREE STANDING  
EXPOSED COLUMNS, TYP  
(COLOR: TBS)

SALES

CORRIDOR

CORRIDOR

GEN. MGR.

OFFICE

EMPLOYEE

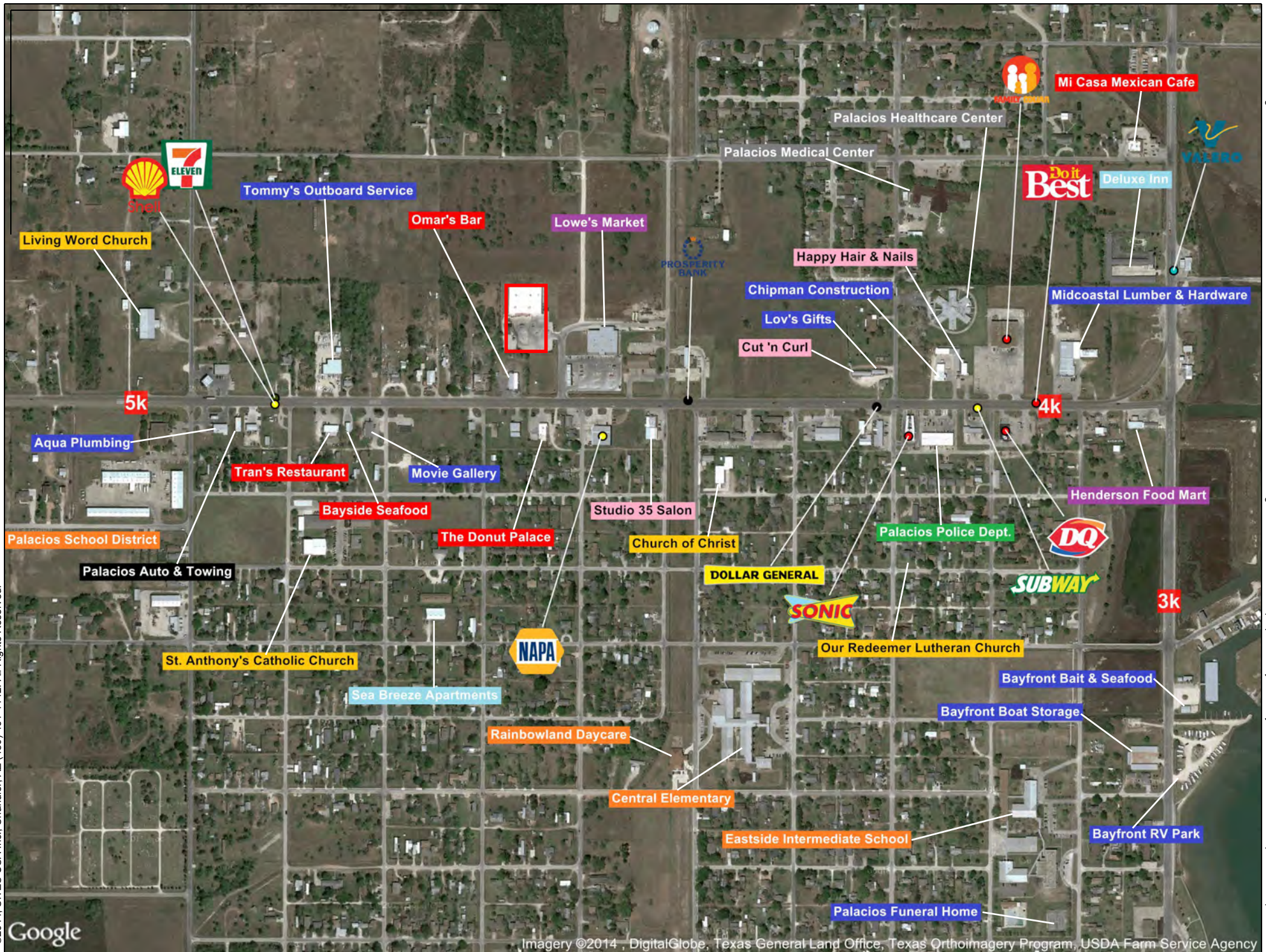
WOMEN

MEN

JANITOR

STORAGE

RECEIVING

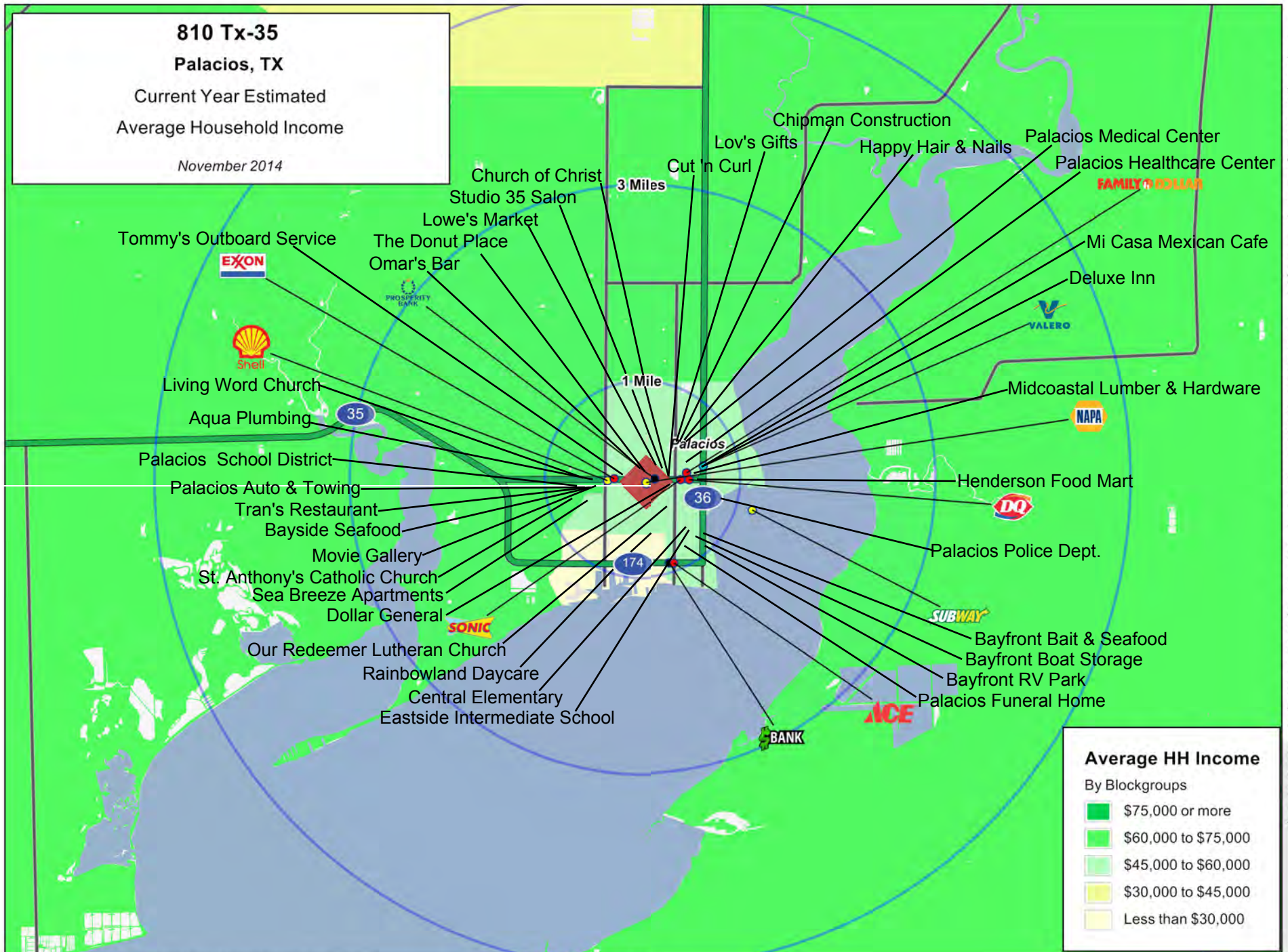


# 810 Tx-35

## Palacios, TX

Current Year Estimated  
Average Household Income

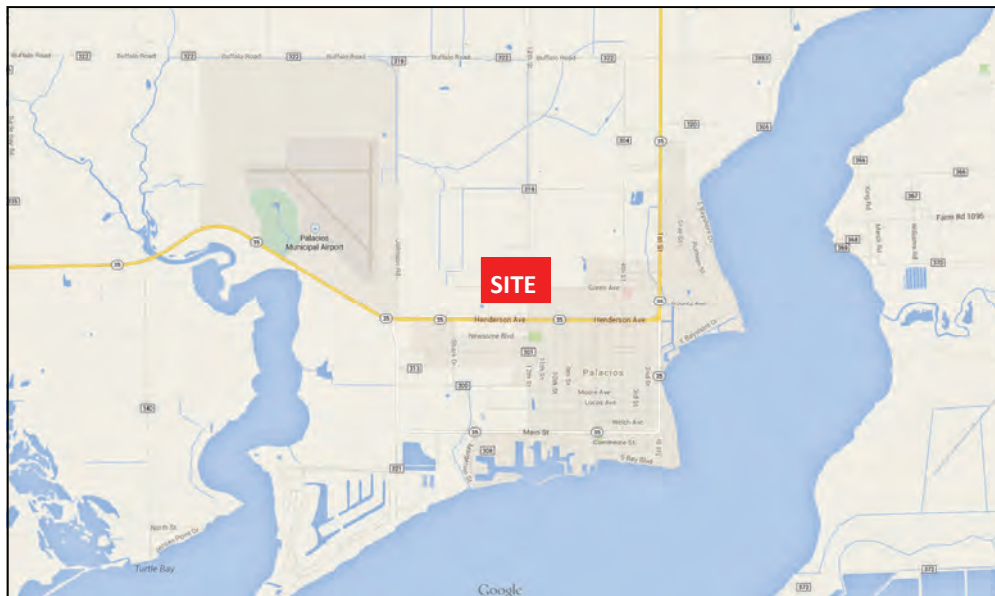
November 2014



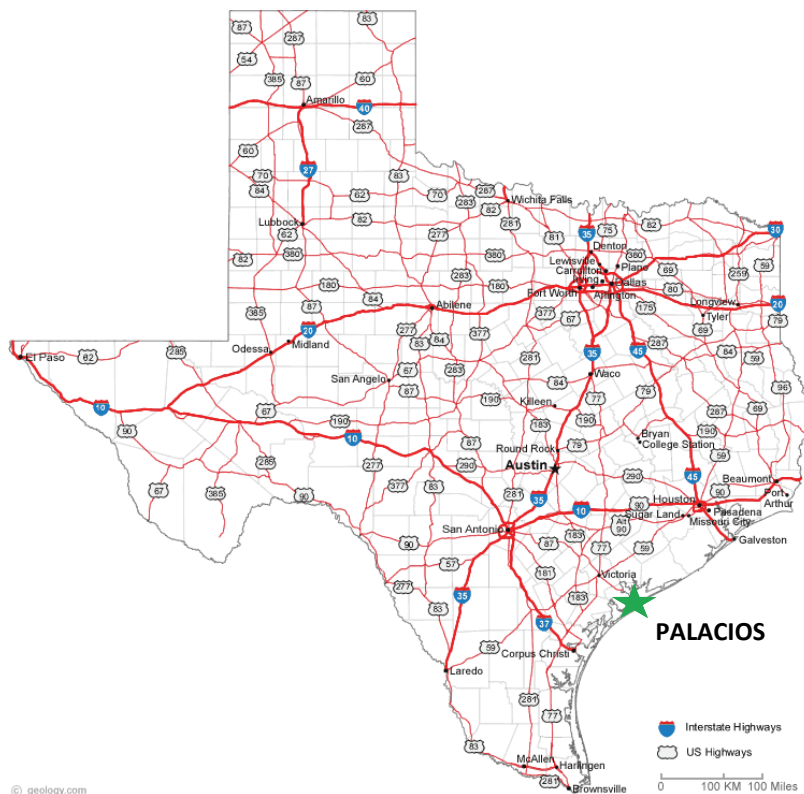
This map was produced using data from private and government sources deemed to be reliable. The information herein is provided without representation or warranty.

# 810 Henderson Street Palacios, TX 77465

The site is ideally located with direct access to State Route 35, in which approximately 5,000 cars pass by daily. Palacios is located in the southeastern portion of Texas, bordering the Gulf of Mexico. Tres Palacios Bay is about a five minute drive from the site.



Part of Matadorga county, Palacios is a halfway point between the cities of Houston and Corpus Christi. Amongst motorcyclists, Palacios was nominated as one of the top ten towns along the Gulf’s coast. It is known as the “City by the Sea,” home to many outdoor activities, with its immediate access to the Gulf. Reported as the top single location, across the United States, with the most reported species of birds.



# COCCA DEVELOPMENT, LTD

**810 Henderson Street Palacios, TX 78361**

## **AT A GLANCE**

- Approximately 25,250 square feet available
- Site is less than three miles from Palacios Municipal Airport
- Approximately 5,000 cars pass by daily on Route 35
- Located along the Gulf Coast halfway between Houston and Corpus Christi
- Area is known for its diverse bird life, reports more bird species than anywhere else in the United States
- Nominated as fifth best small town destination along the Texas Coast

# GRAPHIC PROFILE

2000-2010 Census, 2014 Estimates with 2019 Projections

Calculated using Proportional Block Groups

Prepared For

Prepared By

Lat/Lon: 28.7139/-96.2206

RGRAP3

## 810 Tx-35

### Palacios, TX

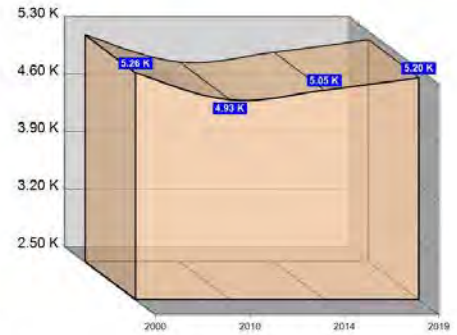
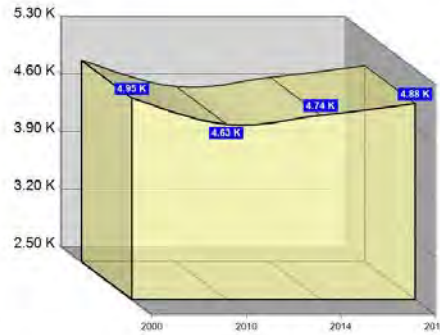
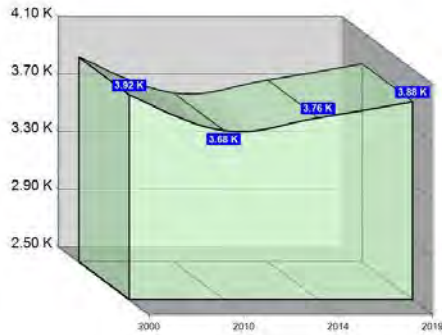
1 Mile

3 Miles

5 Miles

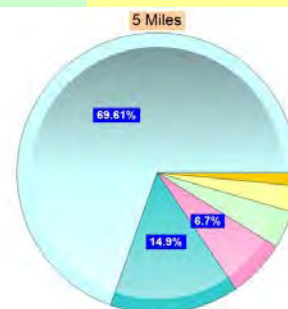
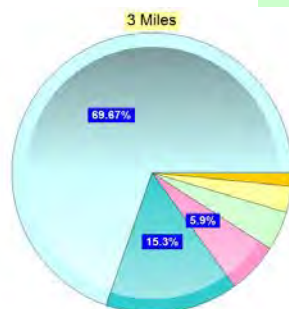
#### Population

Estimated Population (2014)	3,764	4,743	5,050
Projected Population (2019)	3,876	4,884	5,201
Census Population (2010)	3,675	4,631	4,932
Census Population (2000)	3,924	4,951	5,260
Projected Annual Growth (2014-2019)	112 0.6%	141 0.6%	150 0.6%
Historical Annual Growth (2010-2014)	88 -1.7%	112 -1.7%	119 -1.7%
Historical Annual Growth (2000-2010)	-249 -0.6%	-320 -0.6%	-328 -0.6%
Estimated Population Density (2014)	1,199 <i>psm</i>	168 <i>psm</i>	64 <i>psm</i>
Trade Area Size	3.1 <i>sq mi</i>	28.3 <i>sq mi</i>	78.5 <i>sq mi</i>



#### Race and Ethnicity (2014)

Not Hispanic or Latino Population	1,308 34.8%	1,699 35.8%	1,900 37.6%
White	928 70.9%	1,212 71.3%	1,350 71.1%
Black or African American	141 10.8%	169 10.0%	173 9.1%
American Indian or Alaska Native	20 1.5%	24 1.4%	24 1.3%
Asian	187 14.3%	252 14.9%	307 16.2%
Hawaiian or Pacific Islander	-	-	-
Other Race	2 0.1%	3 0.2%	3 0.2%
Two or More Races	30 2.3%	38 2.3%	42 2.2%
Hispanic or Latino Population	2,456 65.2%	3,043 64.2%	3,151 62.4%
White	1,684 68.6%	2,092 68.7%	2,166 68.7%
Black or African American	39 1.6%	45 1.5%	46 1.4%
American Indian or Alaska Native	42 1.7%	49 1.6%	50 1.6%
Asian	23 0.9%	28 0.9%	30 0.9%
Hispanic Hawaiian or Pacific Islander	-	-	-
Other Race	584 23.8%	724 23.8%	748 23.8%
Two or More Races	83 3.4%	106 3.5%	111 3.5%



White Black or African American American Indian or Alaska Native Asian Hawaiian or Pacific Islander Other Race 2+ Races

This report was produced using data from private and government sources deemed to be reliable. The information herein is provided without representation or warranty.



# GRAPHIC PROFILE

2000-2010 Census, 2014 Estimates with 2019 Projections

Calculated using Proportional Block Groups

Prepared For

Prepared By

Lat/Lon: 28.7139/-96.2206

RGRAP3

## 810 Tx-35

### Palacios, TX

1 Mile

3 Miles

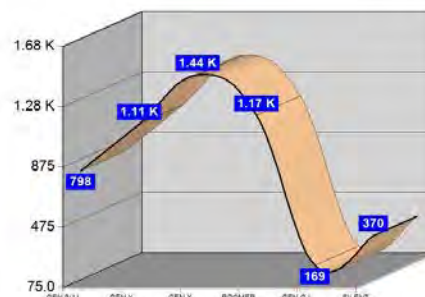
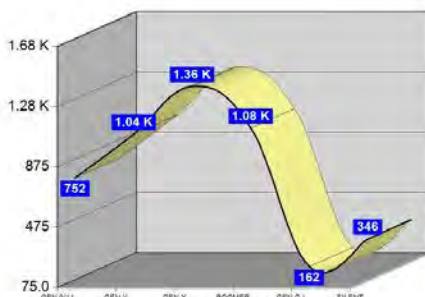
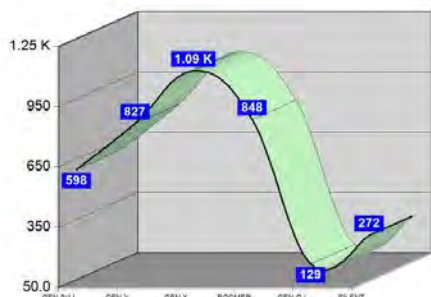
5 Miles

#### Age Distribution (2014)

Age Group	1 Mile	3 Miles	5 Miles
Age Under 5 Years	294 7.8%	369 7.8%	391 7.7%
Age 5 to 9 Years	304 8.1%	383 8.1%	407 8.1%
Age 10 to 14 Years	325 8.6%	404 8.5%	429 8.5%
Age 15 to 19 Years	281 7.5%	352 7.4%	374 7.4%
Age 20 to 24 Years	265 7.0%	326 6.9%	344 6.8%
Age 25 to 29 Years	220 5.8%	277 5.8%	289 5.7%
Age 30 to 34 Years	235 6.2%	295 6.2%	310 6.1%
Age 35 to 39 Years	193 5.1%	244 5.1%	261 5.2%
Age 40 to 44 Years	201 5.3%	254 5.4%	274 5.4%
Age 45 to 49 Years	199 5.3%	249 5.2%	265 5.3%
Age 50 to 54 Years	232 6.2%	293 6.2%	319 6.3%
Age 55 to 59 Years	252 6.7%	317 6.7%	339 6.7%
Age 60 to 64 Years	218 5.8%	285 6.0%	307 6.1%
Age 65 to 69 Years	146 3.9%	187 3.9%	201 4.0%
Age 70 to 74 Years	158 4.2%	200 4.2%	215 4.3%
Age 75 to 79 Years	113 3.0%	146 3.1%	154 3.1%
Age 80 to 84 Years	80 2.1%	100 2.1%	104 2.1%
Age 85 Years or Over	49 1.3%	61 1.3%	65 1.3%
Median Age	33.4	33.7	34.0

#### Generation (2014)

Generation	1 Mile	3 Miles	5 Miles
Generation 9/11 Millennials (Age Under 10 Years)	598 15.9%	752 15.9%	798 15.8%
Gen Y to Echo Boomers (Age 10 to 29 Years)	1,090 29.0%	1,359 28.7%	1,436 28.4%
Gen Xers (Age 30 to 49 Years)	827 22.0%	1,041 22.0%	1,111 22.0%
Baby Boomers (Age 50 to 69 Years)	848 22.5%	1,082 22.8%	1,167 23.1%
Silent Generation (Age 70 to 79 Years)	272 7.2%	346 7.3%	370 7.3%
G.I. Generation (Age 80 Years or Over)	129 3.4%	162 3.4%	169 3.4%



This report was produced using data from private and government sources deemed to be reliable. The information herein is provided without representation or warranty.

# GRAPHIC PROFILE

2000-2010 Census, 2014 Estimates with 2019 Projections

Calculated using Proportional Block Groups

Prepared For

Prepared By

Lat/Lon: 28.7139/-96.2206

RGRAP3

## 810 Tx-35

### Palacios, TX

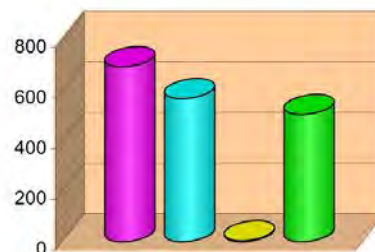
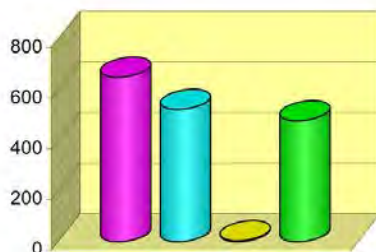
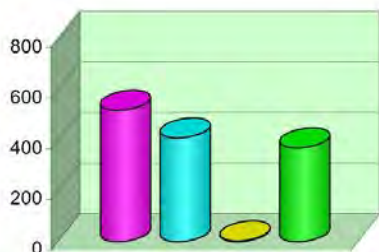
1 Mile

3 Miles

5 Miles

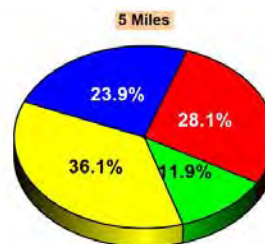
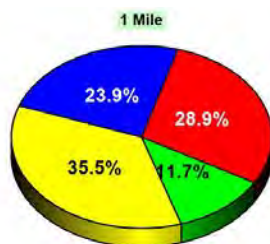
#### Household Type (2014)

	1 Mile	3 Miles	5 Miles
Total Households	1,306	1,659	1,767
Family Households	931 31.5%	1,176 31.6%	1,259 32.1%
Family Households with Children	520 55.9%	652 55.4%	693 55.0%
Family Households No Children	411 44.1%	524 44.6%	567 45.0%
Non-Family Households	375 31.5%	483 31.6%	508 32.1%
Non-Family Households with Children	3 0.9%	4 0.8%	4 0.8%
Non-Family Households No Children	371 99.1%	479 99.2%	504 99.2%



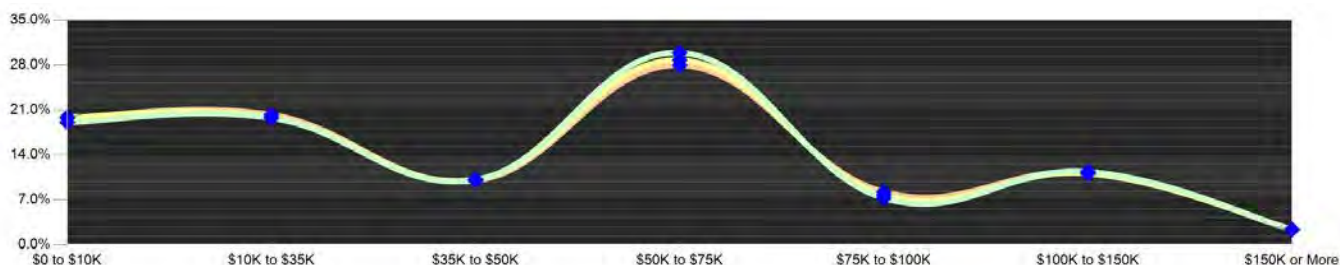
#### Education Attainment (2014)

	1 Mile	3 Miles	5 Miles
Elementary or Some High School	655 28.9%	823 28.6%	862 28.1%
High School Graduate	806 35.5%	1,011 35.2%	1,110 36.1%
Some College or Associate Degree	542 23.9%	699 24.3%	735 23.9%
Bachelor or Graduate Degree	267 11.7%	342 11.9%	365 11.9%



#### Household Income (2014)

	1 Mile	3 Miles	5 Miles
Estimated Average Household Income	\$43,166	\$42,932	\$43,535
Estimated Median Household Income	\$36,583	\$36,076	\$36,449
HH Income Under \$10,000	249 19.1%	330 19.9%	350 19.8%
HH Income \$10,000 to \$34,999	258 19.8%	330 19.9%	359 20.3%
HH Income \$35,000 to \$49,999	132 10.1%	169 10.2%	177 10.0%
HH Income \$50,000 to \$74,999	391 29.9%	478 28.8%	495 28.0%
HH Income \$75,000 to \$99,999	149 11.4%	184 11.1%	199 11.2%
HH Income \$100,000 to \$149,999	149 11.4%	184 11.1%	199 11.2%
HH Income \$150,000 or More	31 2.4%	39 2.4%	43 2.4%



This report was produced using data from private and government sources deemed to be reliable. The information herein is provided without representation or warranty.

# EXPANDED PROFILE

2000-2010 Census, 2014 Estimates with 2019 Projections

Calculated using Proportional Block Groups

Prepared For

Prepared By

Lat/Lon: 28.7139/-96.2206

RF5

## 810 Tx-35

### Palacios, TX

#### Population

	1 Mile	3 Miles	5 Miles
Estimated Population (2014)	3,764	4,743	5,050
Projected Population (2019)	3,876	4,884	5,201
Census Population (2010)	3,675	4,631	4,932
Census Population (2000)	3,924	4,951	5,260
Projected Annual Growth (2014 to 2019)	112 0.6%	141 0.6%	150 0.6%
Historical Annual Growth (2010 to 2014)	88 0.6%	112 0.6%	119 0.6%
Historical Annual Growth (2000 to 2010)	-249 -0.6%	-320 -0.6%	-328 -0.6%
Estimated Population Density (2014)	1,199 <i>psm</i>	168 <i>psm</i>	64 <i>psm</i>
Trade Area Size	3.14 <i>sq mi</i>	28.26 <i>sq mi</i>	78.49 <i>sq mi</i>

#### Households

Estimated Households (2014)	1,306	1,659	1,767
Projected Households (2019)	1,349	1,713	1,825
Census Households (2010)	1,257	1,597	1,701
Census Households (2000)	1,298	1,644	1,741
Estimated Households with Children (2014)	524 40.1%	656 39.5%	697 39.4%
Estimated Average Household Size (2014)	2.86	2.84	2.84

#### Average Household Income

Estimated Average Household Income (2014)	\$50,720	\$50,217	\$50,649
Projected Average Household Income (2019)	\$55,058	\$54,498	\$54,950
Estimated Average Family Income (2014)	\$58,075	\$57,577	\$58,010

#### Median Household Income

Estimated Median Household Income (2014)	\$48,599	\$47,841	\$47,770
Projected Median Household Income (2019)	\$51,295	\$50,581	\$50,529
Estimated Median Family Income (2014)	\$51,500	\$50,935	\$51,069

#### Per Capita Income

Estimated Per Capita Income (2014)	\$17,640	\$17,605	\$17,761
Projected Per Capita Income (2019)	\$19,204	\$19,159	\$19,321
Estimated Per Capita income 5 Year Growth	\$1,564 8.9%	\$1,554 8.8%	\$1,561 8.8%
Estimated Average Household Net Worth (2014)	\$293,193	\$287,469	\$288,742

#### Daytime Demos (2014)

Total Businesses	137	170	175
Total Employees	847	1,050	1,088
Company Headquarter Businesses	1 0.6%	1 0.6%	1 0.6%
Company Headquarter Employees	2 0.2%	2 0.2%	2 0.2%
Employee Population per Business	6.2	6.2	6.2
Residential Population per Business	27.5	28.0	28.9

This report was produced using data from private and government sources deemed to be reliable. The information herein is provided without representation or warranty.

# EXPANDED PROFILE

2000-2010 Census, 2014 Estimates with 2019 Projections

Calculated using Proportional Block Groups

Prepared For

Prepared By

Lat/Lon: 28.7139/-96.2206

RF5

## 810 Tx-35

### Palacios, TX

#### Race & Ethnicity

	1 Mile		3 Miles		5 Miles	
White (2014)	2,612	69.4%	3,305	69.7%	3,516	69.6%
Black or African American (2014)	180	4.8%	215	4.5%	219	4.3%
American Indian or Alaska Native (2014)	62	1.6%	73	1.5%	74	1.5%
Asian (2014)	210	5.6%	280	5.9%	337	6.7%
Hawaiian or Pacific Islander (2014)	-	-	-	-	-	-
Other Race (2014)	586	15.6%	727	15.3%	751	14.9%
Two or More Races (2014)	113	3.0%	144	3.0%	153	3.0%
Not Hispanic or Latino Population (2014)	1,308	34.8%	1,699	35.8%	1,900	37.6%
Hispanic or Latino Population (2014)	2,456	65.2%	3,043	64.2%	3,151	62.4%
Not Hispanic or Latino Population (2019)	1,233	31.8%	1,609	32.9%	1,810	34.8%
Hispanic or Latino Population (2019)	2,642	68.2%	3,275	67.1%	3,391	65.2%
Not Hispanic or Latino Population (2010)	1,373	37.4%	1,778	38.4%	1,977	40.1%
Hispanic or Latino Population (2010)	2,302	62.6%	2,853	61.6%	2,954	59.9%
Not Hispanic or Latino Population (2000)	1,817	46.3%	2,348	47.4%	2,575	49.0%
Hispanic or Latino Population (2000)	2,106	53.7%	2,604	52.6%	2,684	51.0%
Projected Hispanic Annual Growth (2014 to 2019)	187	1.5%	232	1.5%	240	1.5%
Historic Hispanic Annual Growth (2000 to 2014)	349	1.2%	440	1.2%	467	1.2%

#### Age Distribution (2014)

Age Under 5	294	7.8%	369	7.8%	391	7.7%
Age 5 to 9 Years	304	8.1%	383	8.1%	407	8.1%
Age 10 to 14 Years	325	8.6%	404	8.5%	429	8.5%
Age 15 to 19 Years	281	7.5%	352	7.4%	374	7.4%
Age 20 to 24 Years	265	7.0%	326	6.9%	344	6.8%
Age 25 to 29 Years	220	5.8%	277	5.8%	289	5.7%
Age 30 to 34 Years	235	6.2%	295	6.2%	310	6.1%
Age 35 to 39 Years	193	5.1%	244	5.1%	261	5.2%
Age 40 to 44 Years	201	5.3%	254	5.4%	274	5.4%
Age 45 to 49 Years	199	5.3%	249	5.2%	265	5.3%
Age 50 to 54 Years	232	6.2%	293	6.2%	319	6.3%
Age 55 to 59 Years	252	6.7%	317	6.7%	339	6.7%
Age 60 to 64 Years	218	5.8%	285	6.0%	307	6.1%
Age 65 to 74 Years	304	8.1%	387	8.2%	417	8.3%
Age 75 to 84 Years	193	5.1%	246	5.2%	258	5.1%
Age 85 Years or Over	49	1.3%	61	1.3%	65	1.3%
Median Age	33.4		33.7		34.0	

#### Gender Age Distribution (2014)

Female Population	1,891	50.3%	2,374	50.1%	2,521	49.9%
Age 0 to 19 Years	602	31.8%	754	31.7%	796	31.6%
Age 20 to 64 Years	971	51.4%	1,222	51.5%	1,303	51.7%
Age 65 Years or Over	318	16.8%	399	16.8%	422	16.7%
Female Median Age	34.7		35.0		35.2	
Male Population	1,872	49.7%	2,369	49.9%	2,530	50.1%
Age 0 to 19 Years	602	32.1%	755	31.9%	805	31.8%
Age 20 to 64 Years	1,042	55.7%	1,318	55.6%	1,406	55.6%
Age 65 Years or Over	228	12.2%	296	12.5%	319	12.6%
Male Median Age	32.2		32.5		32.9	

This report was produced using data from private and government sources deemed to be reliable. The information herein is provided without representation or warranty.

# EXPANDED PROFILE

2000-2010 Census, 2014 Estimates with 2019 Projections

Calculated using Proportional Block Groups

Prepared For

Prepared By

Lat/Lon: 28.7139/-96.2206

RF5

## 810 Tx-35

### Palacios, TX

#### Household Income Distribution (2014)

	1 Mile		3 Miles		5 Miles	
HH Income \$200,000 or More	6	0.5%	9	0.6%	12	0.7%
HH Income \$150,000 to \$199,999	25	1.9%	30	1.8%	31	1.7%
HH Income \$100,000 to \$149,999	149	11.4%	184	11.1%	199	11.2%
HH Income \$75,000 to \$99,999	95	7.3%	129	7.7%	146	8.2%
HH Income \$50,000 to \$74,999	391	29.9%	478	28.8%	495	28.0%
HH Income \$35,000 to \$49,999	132	10.1%	169	10.2%	177	10.0%
HH Income \$25,000 to \$34,999	99	7.6%	130	7.9%	138	7.8%
HH Income \$15,000 to \$24,999	125	9.5%	158	9.5%	176	10.0%
HH Income Under \$15,000	284	21.7%	372	22.4%	395	22.3%
HH Income \$35,000 or More	798	61.1%	999	60.2%	1,059	59.9%
HH Income \$75,000 or More	275	21.0%	352	21.2%	387	21.9%

#### Housing (2014)

	1 Mile		3 Miles		5 Miles	
Total Housing Units	1,561		1,999		2,143	
Housing Units Occupied	1,306	83.7%	1,659	83.0%	1,767	82.5%
Housing Units Owner-Occupied	869	66.6%	1,105	66.6%	1,197	67.7%
Housing Units, Renter-Occupied	437	33.4%	554	33.4%	571	32.3%
Housing Units, Vacant	255	16.3%	340	17.0%	375	17.5%

#### Marital Status (2014)

	1 Mile		3 Miles		5 Miles	
Never Married	821	28.9%	1,012	28.2%	1,051	27.5%
Currently Married	1,432	50.4%	1,792	50.0%	1,957	51.2%
Separated	147	5.2%	194	5.4%	199	5.2%
Widowed	131	4.6%	178	5.0%	195	5.1%
Divorced	309	10.9%	411	11.5%	421	11.0%

#### Household Type (2014)

	1 Mile		3 Miles		5 Miles	
Population Family	3,209	85.3%	4,024	84.9%	4,300	85.1%
Population Non-Family	527	14.0%	683	14.4%	715	14.2%
Population Group Quarters	28	0.7%	35	0.7%	35	0.7%
Family Households	931	71.3%	1,176	70.9%	1,259	71.2%
Non-Family Households	375	28.7%	483	29.1%	508	28.8%
Married Couple with Children	339	23.7%	426	23.8%	461	23.5%
Average Family Household Size	3.4		3.4		3.4	

#### Household Size (2014)

	1 Mile		3 Miles		5 Miles	
1 Person Households	333	25.5%	429	25.9%	452	25.6%
2 Person Households	368	28.2%	472	28.5%	509	28.8%
3 Person Households	179	13.7%	225	13.6%	241	13.6%
4 Person Households	174	13.3%	217	13.1%	230	13.0%
5 Person Households	127	9.7%	158	9.5%	168	9.5%
6 or More Person Households	125	9.6%	157	9.5%	167	9.4%

#### Household Vehicles (2014)

	1 Mile		3 Miles		5 Miles	
Households with 0 Vehicles Available	65	5.0%	90	5.4%	101	5.7%
Households with 1 Vehicles Available	559	42.8%	698	42.1%	730	41.3%
Households with 2 or More Vehicles Available	682	52.2%	871	52.5%	936	53.0%
Total Vehicles Available	2,136		2,703		2,884	
Average Vehicles Per Household	1.6		1.6		1.6	

This report was produced using data from private and government sources deemed to be reliable. The information herein is provided without representation or warranty.

# EXPANDED PROFILE

2000-2010 Census, 2014 Estimates with 2019 Projections

Calculated using Proportional Block Groups

Prepared For

Prepared By

Lat/Lon: 28.7139/-96.2206

RF5

## 810 Tx-35

### Palacios, TX

#### Labor Force (2014)

	1 Mile	3 Miles	5 Miles
Estimated Labor Population Age 16 Years or Over	2,755	3,480	3,712
Estimated Civilian Employed	1,496 54.3%	1,891 54.3%	2,018 54.4%
Estimated Civilian Unemployed	89 3.2%	113 3.2%	120 3.2%
Estimated in Armed Forces	- -	- -	- -
Estimated Not in Labor Force	1,170 42.5%	1,476 42.4%	1,574 42.4%
Unemployment Rate	3.2%	3.2%	3.2%

#### Occupation (2010)

	1 Mile	3 Miles	5 Miles
Occupation: Population Age 16 Years or Over	1,211	1,525	1,662
Management, Business, Financial Operations	92 7.6%	127 8.4%	157 9.5%
Professional, Related	141 11.6%	186 12.2%	199 12.0%
Service	403 33.3%	487 32.0%	520 31.3%
Sales, Office	106 8.8%	139 9.1%	157 9.5%
Farming, Fishing, Forestry	31 2.6%	42 2.7%	47 2.8%
Construct, Extraction, Maintenance	168 13.8%	212 13.9%	223 13.4%
Production, Transport Material Moving	270 22.3%	330 21.7%	359 21.6%
White Collar Workers	339 28.0%	453 29.7%	514 30.9%
Blue Collar Workers	872 72.0%	1,072 70.3%	1,148 69.1%

#### Consumer Expenditure (2014)

	1 Mile	3 Miles	5 Miles
Total Household Expenditure	\$57.6 M	\$72.7 M	\$77.9 M
Total Non-Retail Expenditure	\$33.1 M 57.4%	\$41.8 M 57.4%	\$44.7 M 57.4%
Total Retail Expenditure	\$24.5 M 42.6%	\$31.0 M 42.6%	\$33.2 M 42.6%
Apparel	\$2.78 M 4.8%	\$3.51 M 4.8%	\$3.75 M 4.8%
Contributions	\$1.95 M 3.4%	\$2.46 M 3.4%	\$2.64 M 3.4%
Education	\$1.34 M 2.3%	\$1.69 M 2.3%	\$1.81 M 2.3%
Entertainment	\$3.17 M 5.5%	\$4.00 M 5.5%	\$4.29 M 5.5%
Food and Beverages	\$9.08 M 15.8%	\$11.5 M 15.8%	\$12.3 M 15.7%
Furnishings and Equipment	\$2.44 M 4.2%	\$3.08 M 4.2%	\$3.30 M 4.2%
Gifts	\$1.43 M 2.5%	\$1.81 M 2.5%	\$1.94 M 2.5%
Health Care	\$3.59 M 6.2%	\$4.53 M 6.2%	\$4.85 M 6.2%
Household Operations	\$1.96 M 3.4%	\$2.47 M 3.4%	\$2.65 M 3.4%
Miscellaneous Expenses	\$993 K 1.7%	\$1.25 M 1.7%	\$1.34 M 1.7%
Personal Care	\$840 K 1.5%	\$1.06 M 1.5%	\$1.13 M 1.5%
Personal Insurance	\$552 K 1.0%	\$697 K 1.0%	\$748 K 1.0%
Reading	\$186 K 0.3%	\$235 K 0.3%	\$252 K 0.3%
Shelter	\$11.1 M 19.2%	\$14.0 M 19.2%	\$15.0 M 19.2%
Tobacco	\$402 K 0.7%	\$508 K 0.7%	\$544 K 0.7%
Transportation	\$11.7 M 20.3%	\$14.7 M 20.3%	\$15.8 M 20.2%
Utilities	\$4.16 M 7.2%	\$5.25 M 7.2%	\$5.62 M 7.2%

#### Educational Attainment (2014)

	1 Mile	3 Miles	5 Miles
Adult Population Age 25 Years or Over	2,269	2,876	3,074
Elementary (Grade Level 0 to 8)	428 18.8%	519 18.0%	537 17.5%
Some High School (Grade Level 9 to 11)	227 10.0%	305 10.6%	325 10.6%
High School Graduate	806 35.5%	1,011 35.2%	1,110 36.1%
Some College	408 18.0%	529 18.4%	552 18.0%
Associate Degree Only	134 5.9%	170 5.9%	183 6.0%
Bachelor Degree Only	160 7.1%	210 7.3%	227 7.4%
Graduate Degree	106 4.7%	133 4.6%	139 4.5%

This report was produced using data from private and government sources deemed to be reliable. The information herein is provided without representation or warranty.

# EXPANDED PROFILE

2000-2010 Census, 2014 Estimates with 2019 Projections

Calculated using Proportional Block Groups

Prepared For

Prepared By

Lat/Lon: 28.7139/-96.2206

RF5

## 810 Tx-35

### Palacios, TX

#### Units In Structure (2010)

	1 Mile		3 Miles		5 Miles	
1 Detached Unit	840	66.8%	1,076	67.4%	1,165	68.5%
1 Attached Unit	4	0.3%	5	0.3%	5	0.3%
2 to 4 Units	120	9.6%	134	8.4%	134	7.9%
5 to 9 Units	60	4.8%	78	4.9%	78	4.6%
10 to 19 Units	8	0.6%	10	0.6%	10	0.6%
20 to 49 Units	23	1.8%	30	1.9%	30	1.8%
50 or More Units	6	0.5%	8	0.5%	8	0.5%
Mobile Home or Trailer	166	13.2%	217	13.6%	231	13.6%
Other Structure	30	2.3%	38	2.4%	38	2.2%

#### Homes Built By Year (2010)

	1 Mile		3 Miles		5 Miles	
Homes Built 2005 or later	58	4.7%	74	4.6%	77	4.5%
Homes Built 2000 to 2004	85	6.8%	110	6.9%	119	7.0%
Homes Built 1990 to 1999	146	11.6%	195	12.2%	214	12.6%
Homes Built 1980 to 1989	192	15.3%	239	15.0%	257	15.1%
Homes Built 1970 to 1979	277	22.0%	344	21.5%	354	20.8%
Homes Built 1960 to 1969	233	18.6%	292	18.3%	300	17.7%
Homes Built 1950 to 1959	141	11.2%	189	11.8%	214	12.6%
Homes Built Before 1949	125	9.9%	154	9.7%	165	9.7%

#### Home Values (2010)

	1 Mile		3 Miles		5 Miles	
Home Values \$1,000,000 or More	1	0.1%	2	0.2%	5	0.4%
Home Values \$500,000 to \$999,999	4	0.5%	7	0.6%	11	0.9%
Home Values \$400,000 to \$499,999	3	0.4%	4	0.4%	4	0.4%
Home Values \$300,000 to \$399,999	27	3.2%	35	3.3%	38	3.3%
Home Values \$200,000 to \$299,999	23	2.8%	34	3.2%	46	4.0%
Home Values \$150,000 to \$199,999	77	9.3%	101	9.6%	112	9.8%
Home Values \$100,000 to \$149,999	113	13.6%	143	13.6%	155	13.6%
Home Values \$70,000 to \$99,999	113	13.6%	143	13.6%	158	13.9%
Home Values \$50,000 to \$69,999	161	19.4%	194	18.4%	199	17.4%
Home Values \$25,000 to \$49,999	142	17.2%	175	16.6%	191	16.7%
Home Values Under \$25,000	165	19.9%	216	20.5%	224	19.6%
Owner-Occupied Median Home Value	\$58,622		\$59,083		\$62,674	
Renter-Occupied Median Rent	\$387		\$393		\$390	

#### Transportation To Work (2010)

	1 Mile		3 Miles		5 Miles	
Drive to Work Alone	975	79.3%	1,203	78.3%	1,307	78.8%
Drive to Work in Carpool	172	14.0%	231	15.1%	240	14.5%
Travel to Work by Public Transportation	3	0.2%	3	0.2%	3	0.2%
Drive to Work on Motorcycle	1	-	1	0.1%	1	0.1%
Walk or Bicycle to Work	50	4.1%	57	3.7%	57	3.5%
Other Means	-	-	-	-	-	-
Work at Home	30	2.4%	40	2.6%	49	3.0%

#### Travel Time (2010)

	1 Mile		3 Miles		5 Miles	
Travel to Work in 14 Minutes or Less	612	51.0%	731	48.9%	787	48.9%
Travel to Work in 15 to 29 Minutes	225	18.7%	302	20.2%	324	20.1%
Travel to Work in 30 to 59 Minutes	310	25.8%	389	26.0%	418	26.0%
Travel to Work in 60 Minutes or More	53	4.4%	73	4.9%	80	5.0%
Average Minutes Travel to Work	13.8		14.8		14.8	

This report was produced using data from private and government sources deemed to be reliable. The information herein is provided without representation or warranty.